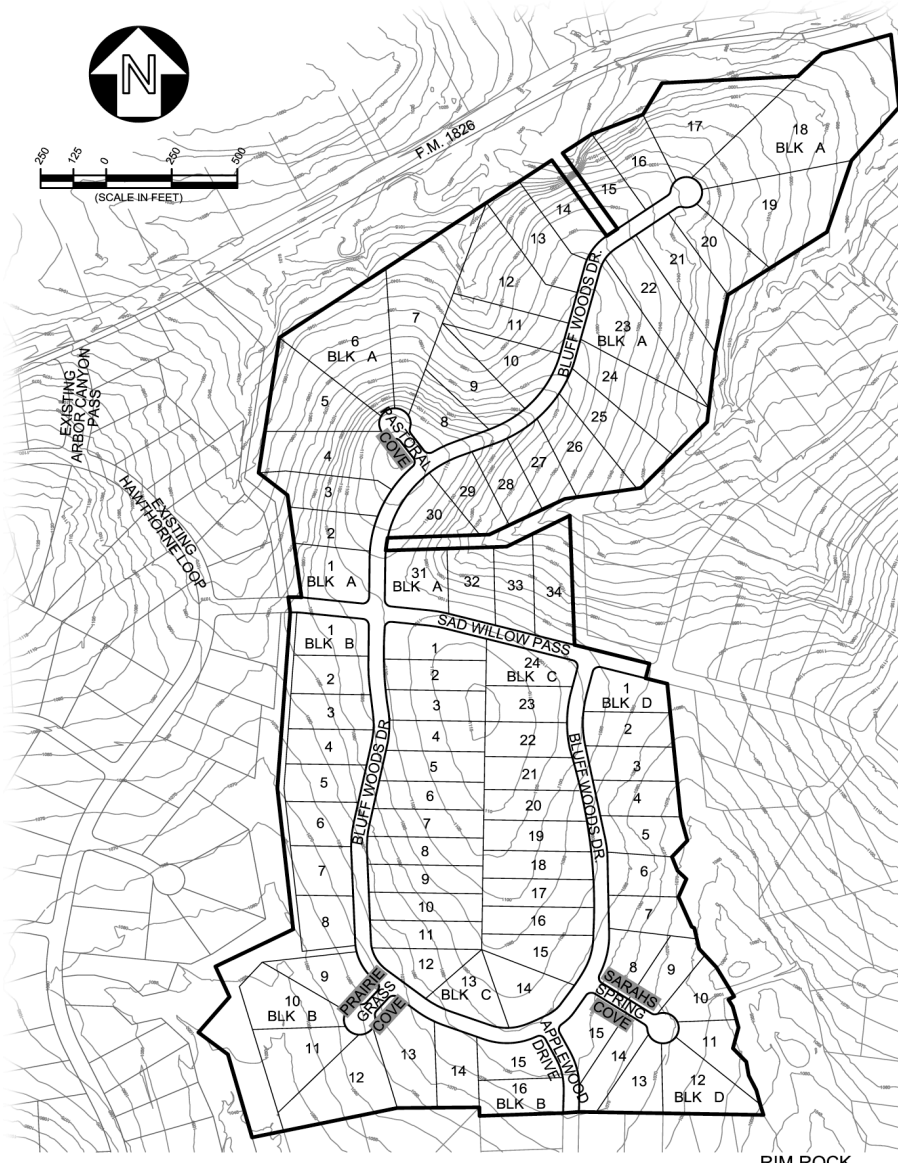


**RimRock**

**Phase 2 • Section 2**

**Price List**

**BLOCK A**



Lot	Sales Price	Acres
1	UC F	1.31
2	UC M	1.00
3	90,000	1.31
4	SOLD	2.22
5	85,900	2.13
6	87,900	2.99
7	83,900	3.13
8	85,900	1.20
9	83,900	1.52
10	84,900	1.37
11	85,900	1.32
12	89,900	2.22
13	88,900	1.57
14	87,900	1.29
15	88,900	1.10
16	91,900	1.39
17	99,900	2.91
18	SOLD	5.43
19	SOLD	3.15
20	SOLD	1.30
21	SOLD	1.72
22	SOLD	2.12
23	SOLD	2.09
24	SOLD	2.17
25	95,900	1.69
26	93,900	1.56
27	89,900	1.01
28	87,000	1.02
29	SOLD	1.11
30	89,900	1.13
31	SOLD	1.28
32	UC M	1.14
33	UC M	1.19
34	SOLD	1.53

**BLOCK C**

Lot	Sales Price	Acres
1	UC M	1.11
2	SOLD M	1.06
3	SOLD M	1.02
4	UC M	1.01
5	UC M	1.07
6	UC M	1.03
7	SOLD M	1.09
8	SOLD M	1.11
9	SOLD M	1.10
10	UC G	1.08
11	UC G	1.07
12	80,900	1.03
13	SOLD	1.08
14	UC M	1.25
15	UC M	1.27
16	UC M	1.06
17	SOLD M	1.05
18	UC M	1.04
19	UC M	1.10
20	UC M	1.03
21	UC M	1.03
22	SOLD M	1.01
23	UC M	1.03
24	UC M	1.11

**BLOCK B**

Lot	Sales Price	Acres
1	UC F	1.00
2	SOLD	1.01
3	UC F	1.00
4	UC F	1.01
5	UC F	1.00
6	UC F	1.00
7	UC F	1.00
8	UC F	1.00
9	UC F	1.25
10	UC F	1.52
11	SOLD	1.63
12	SOLD	2.14
13	UC F	1.83
14	SOLD	1.13
15	UC F	1.04
16	UC F	1.03

**BLOCK D**

Lot	Sales Price	Acres
1	UC M	1.05
2	UC F	1.04
3	UC F	1.02
4	UC F	1.01
5	UC F	1.03
6	UC F	1.02
7	UC F	1.00
8	UC F	1.00
9	UC M	1.00
10	UC M	1.02
11	SOLD	1.01
12	SOLD	1.60
13	UC F	1.05
14	UC F	1.01
15	UC F	1.02

**For sales information CALL JOHN LLOYD BROKER DEVELOPER**

**512-328-0860 or 512-750-3715**

August 1, 2011 Phase 2 Sec 2 Complete